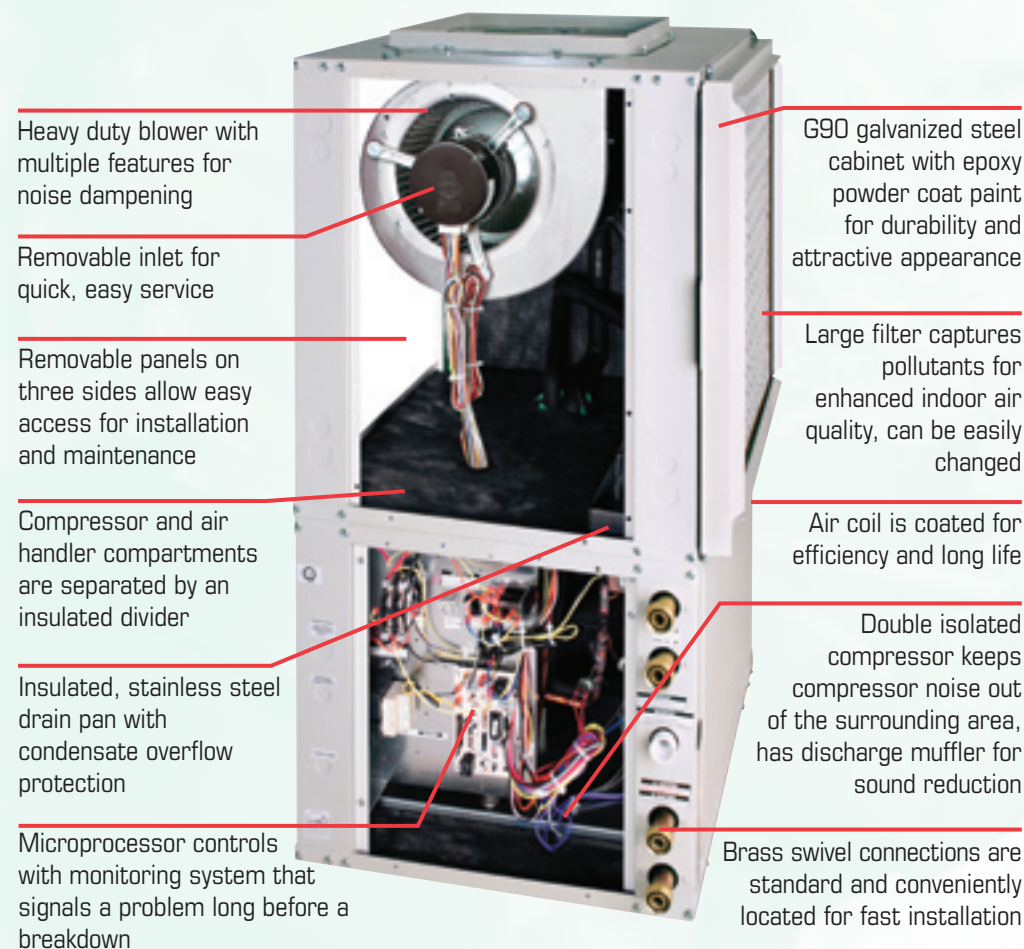


advanced DESIGN

...makes all our models quiet and efficient



Heavy duty blower with multiple features for noise dampening

Removable inlet for quick, easy service

Removable panels on three sides allow easy access for installation and maintenance

Compressor and air handler compartments are separated by an insulated divider

Insulated, stainless steel drain pan with condensate overflow protection

Microprocessor controls with monitoring system that signals a problem long before a breakdown

G90 galvanized steel cabinet with epoxy powder coat paint for durability and attractive appearance

Large filter captures pollutants for enhanced indoor air quality, can be easily changed

Air coil is coated for efficiency and long life

Double isolated compressor keeps compressor noise out of the surrounding area, has discharge muffler for sound reduction

Brass swivel connections are standard and conveniently located for fast installation

HORIZONTAL UNIT: Includes same components shown but in a "side by side" configuration.

SPLIT SYSTEM MODEL: Contains components in the bottom half of the unit shown. A separate air handler or furnace fan is required.

Comfort-Aire geothermal heat pumps meet or exceed all applicable industry standards.



What do we mean by "Energy Efficient"?

In recent years, the HVAC industry has made significant advances in the energy efficiency of heating and cooling systems. You can judge efficiencies yourself by comparing some industry standards.

Cooling efficiency is measured by an Energy Efficiency Ratio (EER). The higher the number, the more efficient the equipment. Our geothermal units have EER ratings as high as 25 at closed loop conditions, while you'll generally see new traditional-type heat pump ratings in the teens—13 to 18 SEER, for instance, with an actual EER of 10 to 15.

On the heating side, efficiency is shown by a Coefficient of Performance (COP) and the higher the number, the better. Again, geothermal systems—especially our two stage models—compare very favorably to traditional heat pumps.

Exceptional efficiency means fast payback...

Although the initial installation cost of a geothermal system is higher than a traditional heat pump, you can quickly recoup these costs through energy savings.

Geothermal heat pumps average:

- 40% greater efficiency than air-to-air heat pumps
- 48% greater efficiency than gas furnaces
- 75% greater efficiency than oil furnaces

(Source: Geothermal Heat Pump Consortium)

Ask your dealer to prepare a cost savings analysis for you to determine just how much you can save over the life of the system. And with energy rates on the rise, those savings are only going to increase!

PEACE OF MIND

Purchasing a heating/cooling system is a big investment, and one you expect to last for many years. That's true whether you're building a new home or replacing equipment in an existing residence. You can select Comfort-Aire with confidence because we back our geothermal equipment with industry-leading warranties and technical support. Ask your dealer for the printed warranty or visit the Geothermal Products section of our web site, www.comfort-aire.com, for details.

...from a company you can count on for quality

Comfort-Aire has been keeping homes comfortable for 75 years. Our first products were gas- and oil-fired furnaces, and we added air conditioning to our line over 50 years ago. Today we offer a full line of equipment for residential as well as commercial heating, cooling and dehumidification.

Our name may be new to you, but our tradition of dependable products backed by outstanding warranties has stood the test of time, as reflected in our motto:

THE QUALITY LEADER IN CONDITIONING AIR

Design specifications and performance data subject to change without notice

HEAT CONTROLLER, INC.

1900 Wellworth Avenue
Jackson, Michigan 49203
Telephone 517-787-2100
Fax 517-787-9341
www.comfort-aire.com



Geothermal...
your best
choice,
naturally

NOTHING COMPARES

...to the efficiency of Geothermal Heat Pumps



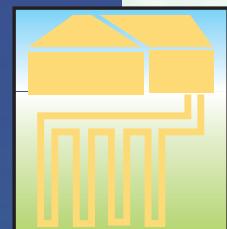
Comfort-Aire

The Most Economical Way to Heat and Cool Your Home!

The Two Types of Geothermal Systems

CLOSED LOOP

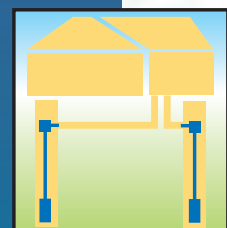
A heat exchanger, typically made of polyethylene tubing, is buried in the earth or submerged in a pond or lake. A solution of water and antifreeze is pumped through the tubing. In the winter it absorbs heat from the earth or pond. This relatively warm solution is then delivered to the heat pump which extracts heat and circulates warm air throughout the house.



During hot weather, heat in the home is extracted by the heat pump and transferred to the liquid circulating through the closed loop tubing. The cooler earth, pond or lake then absorbs this heat, and the cooled water is circulated back to the heat pump.

GROUND WATER

Water is removed from an aquifer and is circulated through the heat pump. In the heating mode, heat is extracted from the water and transferred to the air that brings the home to the desired comfort level. The water used in this process is discharged to a pond or lake, or into another well—unchanged except for temperature.



During summer months, the process is reversed and heat from the home is extracted by the heat pump and transferred to the cooler ground water.

Which type of system you select is determined by your preference, your geographic area, and the availability of ground water or adequate land for burying loop pipes. Designed properly, all systems work equally well.

Use the earth's natural energy for year 'round comfort in any climate

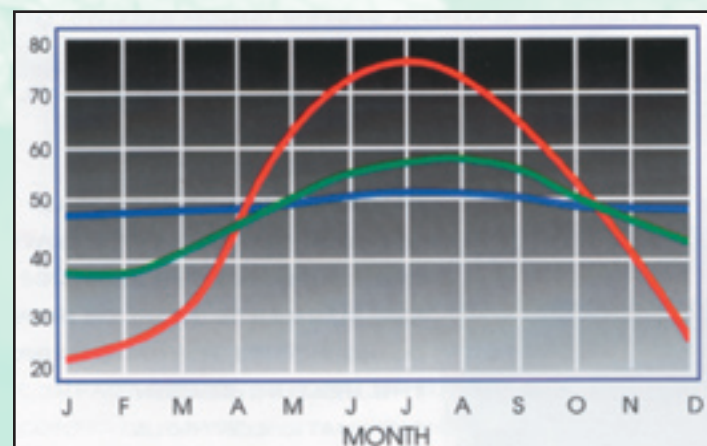
A geothermal heat pump is the most efficient heating and cooling system available today, using the renewable resources of the earth itself for heat transfer.

Because the system uses the relatively stable temperatures of the earth, it is only transferring heat, not burning fossil fuels to create heat. As a result, approximately four units of heat energy are produced for every unit used!

In the winter, heat is absorbed from the water or ground (depending on the type of system) and transferred to the heat pump where it is distributed by the air handler. In summer, hot air in the home is extracted and transferred to the cooler ground or water.

Not only is it possible to heat and cool your home with a geothermal heat pump, but your domestic hot water supply can be heated with the system as well, for even greater savings on your utility bills!

Both the Closed Loop and Ground Water systems are extraordinarily efficient because in most geographical areas, the temperature of the earth at 5 feet below the surface stays relative stable. Similarly, ground water temperatures remain fairly constant in every season, as shown in this chart:

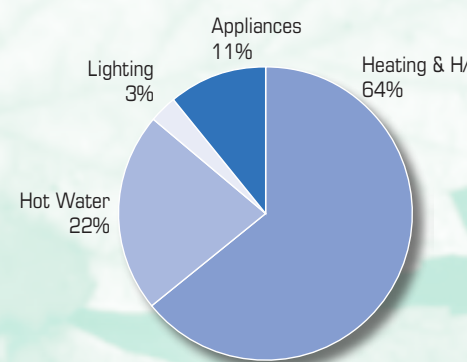


■ Ground Water ■ Earth at 5 feet ■ Ambient Air

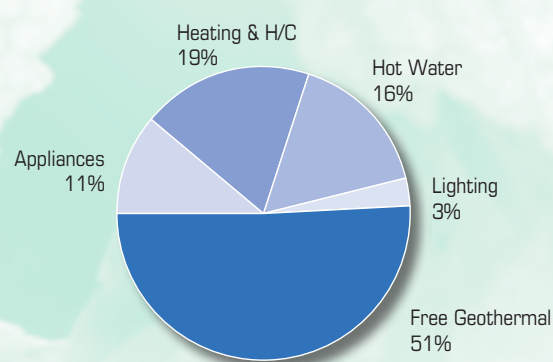
The stable temperatures of ground water and the earth itself make it possible for the energy exchange to occur in geothermal systems, keeping you cool in summer and warm in winter.

With a geothermal system, over half your home's energy is free!

RESIDENTIAL ENERGY USE



Conventional System



Geothermal System

two STAGE

Maximum efficiency for greatest savings

The GeoMax 2 is one of the most efficient heating and cooling systems available, far exceeding industry standards. The two-stage design allows the unit to run at 67% capacity most of the time to maintain a consistent temperature and healthy humidity level. When there's a demand for greater heating/cooling, such as during weather extremes, the unit instantly shifts to 100% capacity. This part load/full load capability significantly lowers annual operating costs while increasing comfort.

FEATURES

- **Quiet Operation**—A variety of technologies and insulation deaden vibration and sound attenuation, making these among the quietest units on the market today
- **ECM Motor**—Latest high tech design provides a multitude of benefits including silent ramp-up, auto adaptability to the system, a speed for every mode and much more—all designed for even temperatures throughout the home
- **Two Stage Compressor**—State-of-the-art design delivers comfort more efficiently than single stage models
- **Microprocessor Controls**—Includes performance monitoring system to signal a potential problem so maintenance can be scheduled—similar to your car's "check engine" light
- **Value Added**—Hot water generator with built-in pump supplies domestic hot water when the unit is running in either heating or cooling mode

HTV Series Vertical Heat Pump 2 to 5 Tons

Self-contained, packaged units are designed for easy installation. Variable speed blower motor provides a wide range of operational modes to further maximize comfort and efficiency.

HTS Series Split System 2 to 5 Tons

Split system units are designed to be coupled with an air handler or add-on furnace coil. These systems also offer the flexibility of an all-electric or dual fuel system.



Outstanding Warranty Coverage
12 years on compressor,
6 years on other parts
(see printed warranty for details)



Here's why our geothermal heat pumps are a natural choice...

Extraordinary energy efficiency = significantly lower utility bills

Year 'round comfort

Exceptionally quiet operation

Safety because there are no fumes or odors, and no open flame

Fewer moving parts to wear out

Environmentally sound technology recognized by the EPA and the Department of Energy

Extended Range—20° to 120° F operation makes these quality geothermal units suitable for virtually all climates!

Comfort-Aire two stage models use environmentally friendly refrigerant, R-410A



single STAGE

An energy-saving option to costly fossil fuel systems

Advanced geothermal design combined with quality components and durable construction means reliable, efficient heating and cooling. Like all our geothermal systems, the HR and HS Series exceed industry standards for energy efficiency.

FEATURES

- **Quiet Operation**—Special compressor and motor mountings reduce vibration for quiet operation; insulation and compressor discharge muffler make these some of the quietest units available today
- **Easy Installation/Service**—Panels on three sides are quickly removed for access to components for maintenance
- **Multiple Safety Features**—Protects the unit from damage from such conditions as loss of charge, low or high pressure, condensate overflow, and more
- **Microprocessor Controls**—Like your car's "check engine" light, performance monitoring system signals a potential problem before a lockout can occur
- **Options**—Domestic hot water generator is available as an option for extra energy savings

Outstanding Warranty Coverage
7 years on compressor,
5 years on other parts
(see printed warranty for details)

HR Series Heat Pumps 1 1/2 to 6 Tons

These self-contained, package units are available in two configurations. Compact horizontal units are ideal for tight spaces such as dropped ceilings and crawl spaces. Vertical styles fit well in utility rooms and closets, offering easy conversion from fossil fuel furnaces.



HSS Series Split System 2 to 5 Tons

The split system design is ideal for locations or applications where a package unit won't fit or work in the existing space. Not only is the HSS cabinet compact, it can be stacked for multi-unit installation. The unit is designed to couple with most multi-position air handlers or add-on furnace coils, and offers the flexibility of an all-electric or dual fuel system.



Also available: HSW water-to-water series for radiant floor geothermal installations. See your dealer for specifications.